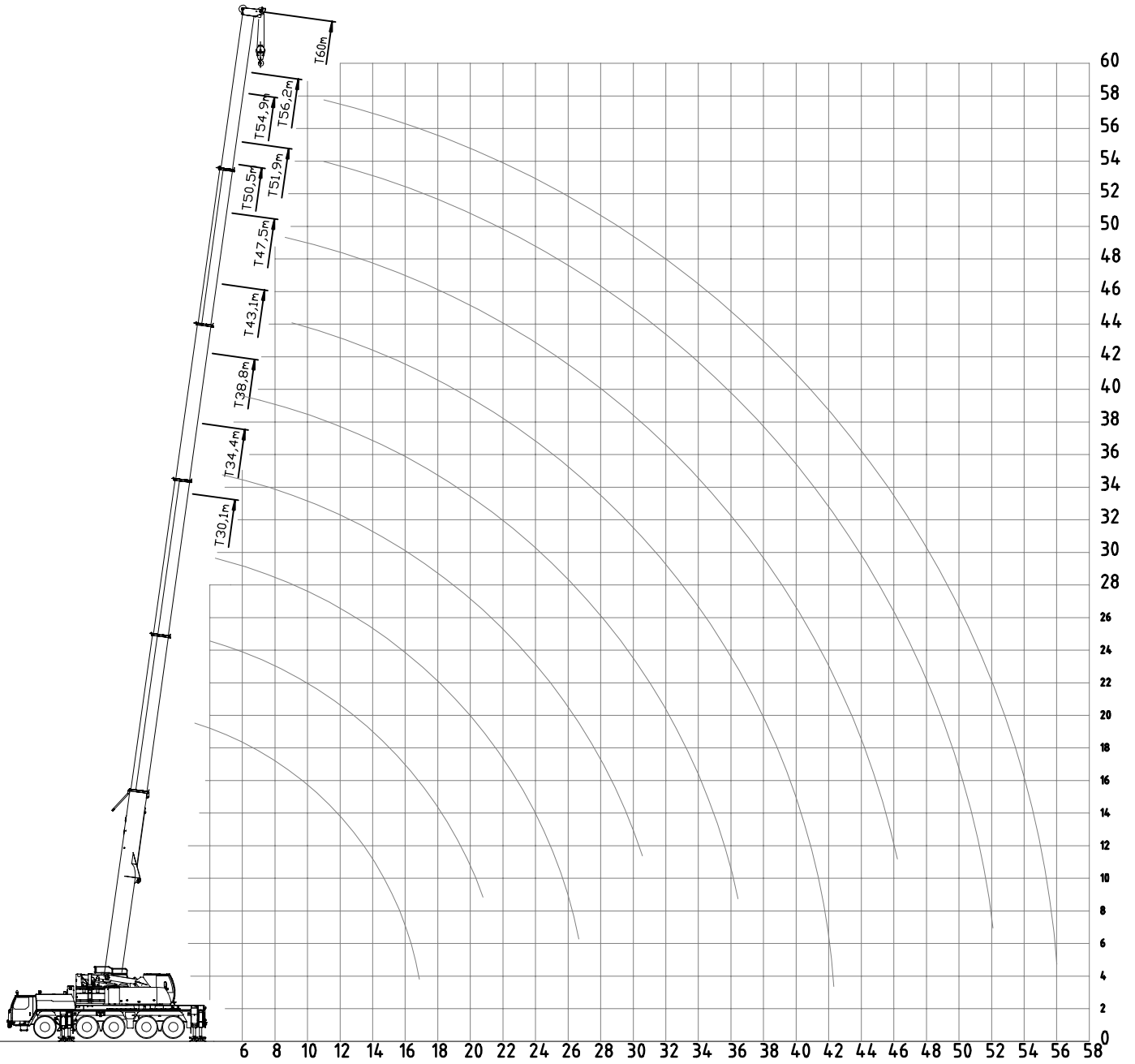


**VERTICAAL TRANSPORT
NEDERLAND B.V.**

*Weg-terrein kraan
140 ton*

Kraan 140 TON

Vlucht tabel hoofdmast



**VERTICAAL TRANSPORT
NEDERLAND B.V.**

HIJSTABEL 140 TON

Kraan afgestempeld, Stempelbasis: 8.0 x 7.5 m 360° Werkbereik,
29.3 ton contra-gewicht

Vlucht radius meters	Gieklengte in meters															
	12.7	17	21.4	25.7	30.1	34.4	38.8	43.1	47.5	50.5	51.9	54.9	56.2	60		
2.5	140															
3	100	83														3
3.5	92	83	82	70												3.5
4	85	82	79	68	57											4
4.5	79	77	74	66	56											4.5
5	73	72	69	64	55	43.5										5
6	63	64	62	60	52	42	32.5									6
7	54	55	55	54	49	40.5	32	25								7
8	47	47.5	48	47.5	47	39	31	24.5	19.6							8
9	41	42	42	42	42.5	37.5	30	23.9	19.3	14.5	16					9
10	36	37	37	37.5	37.5	35.5	28.6	23.4	18.9	14.5	16	12.8	13	10.5	10	10
12		29.1	30	30	29.8	28.2	25.5	21.7	18.2	13.6	15.5	12.6	12.9	10.5	12	12
14		23.4	24	24.1	23.8	23	21.9	19.5	16.9	12.6	14.7	12	12.4	10.5	14	14
16			19.6	19.6	19.3	18.9	19.3	17.5	15.5	11.6	13.7	11.3	11.8	10.2	16	16
18			16.3	16.3	16.1	16.7	16.2	15.1	14.2	10.7	12.7	10.5	11.1	9.8	18	18
20				13.8	14.4	14.1	13.6	13.2	12.3	9.9	11.7	9.8	10.4	9.2	20	20
22				11.8	12.4	12.1	11.7	11.9	11.1	9	10.7	9.2	9.8	8.6	22	22
24					10.8	10.5	10.7	10.3	10	8.3	9.3	8.5	9.1	8.1	24	24
26					9.5	9.2	9.4	9	9.1	7.7	8.6	7.9	8.2	7.6	26	26
28						8.4	8.3	8.2	7.9	7.1	7.8	7.4	7.2	7	28	28
30						7.7	7.4	7.3	7.1	6.6	6.9	6.9	6.4	6.2	30	30
32						6.9	6.6	6.5	6.3	6.1	6	6.1	5.5	5.5	32	32
34							6	5.8	5.5	5.6	5.3	5.3	4.8	4.8	34	34
36							5.3	5.2	4.9	4.9	4.6	4.7	4.2	4.1	36	36
38								4.6	4.3	4.4	4.1	4.1	3.6	3.6	38	38
40								4.1	3.8	3.9	3.6	3.6	3.1	3.1	40	40
42									3.4	3.4	3.1	3.2	2.7	2.7	42	42
44									3	3	2.7	2.8	2.3	2.3	44	44
46										2.6	2.3	2.4	1.9	1.9	46	46
48										2.3	2	2.1	1.6	1.6	48	48
50												1.8	1.3	1.3	50	50
52												1.5	1	1	52	52

KRAAN 140 TON afmetingen

