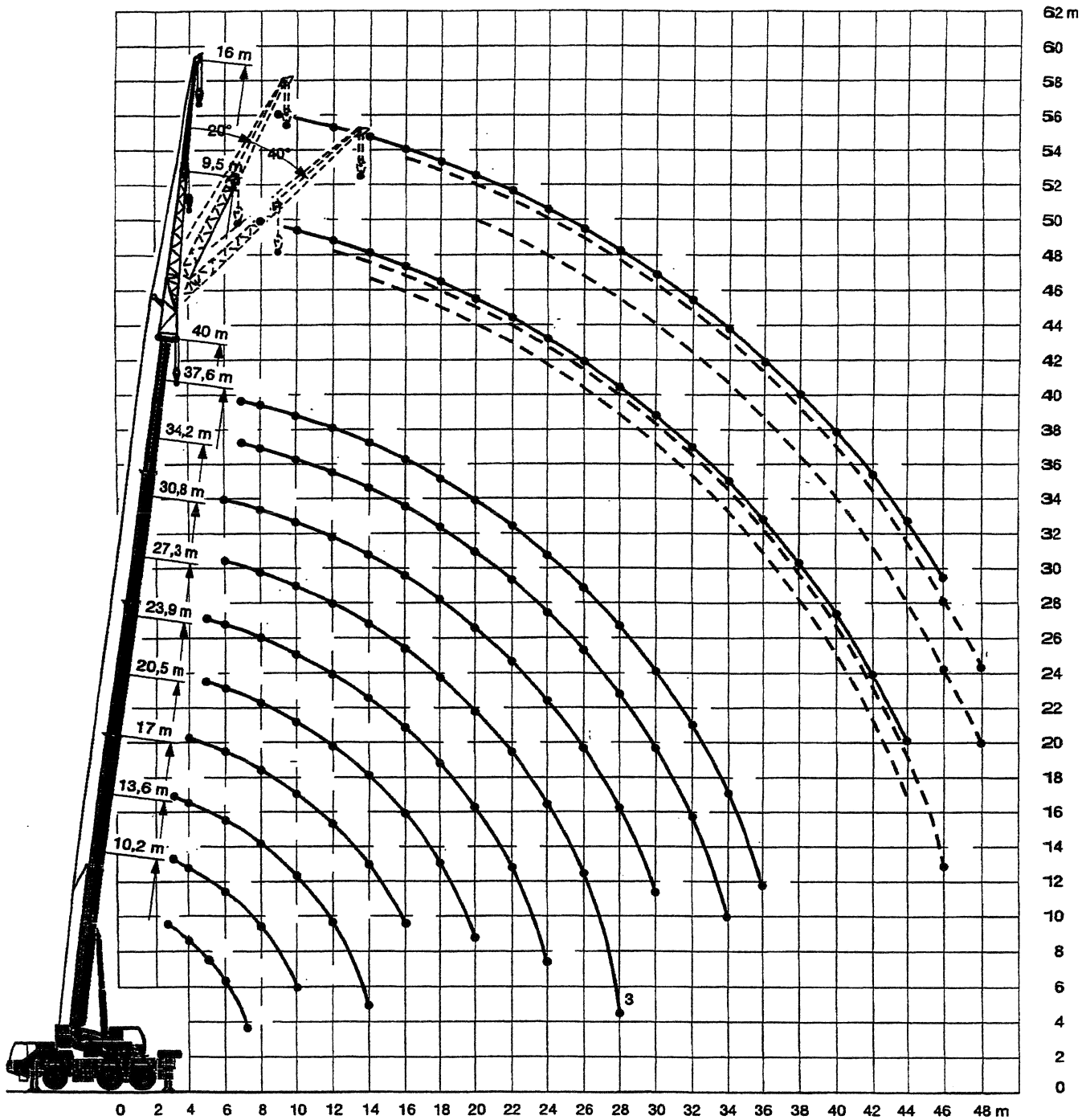


**VERTICAAL TRANSPORT
NEDERLAND B.V.**

*Weg-terrein kraan
60 ton*



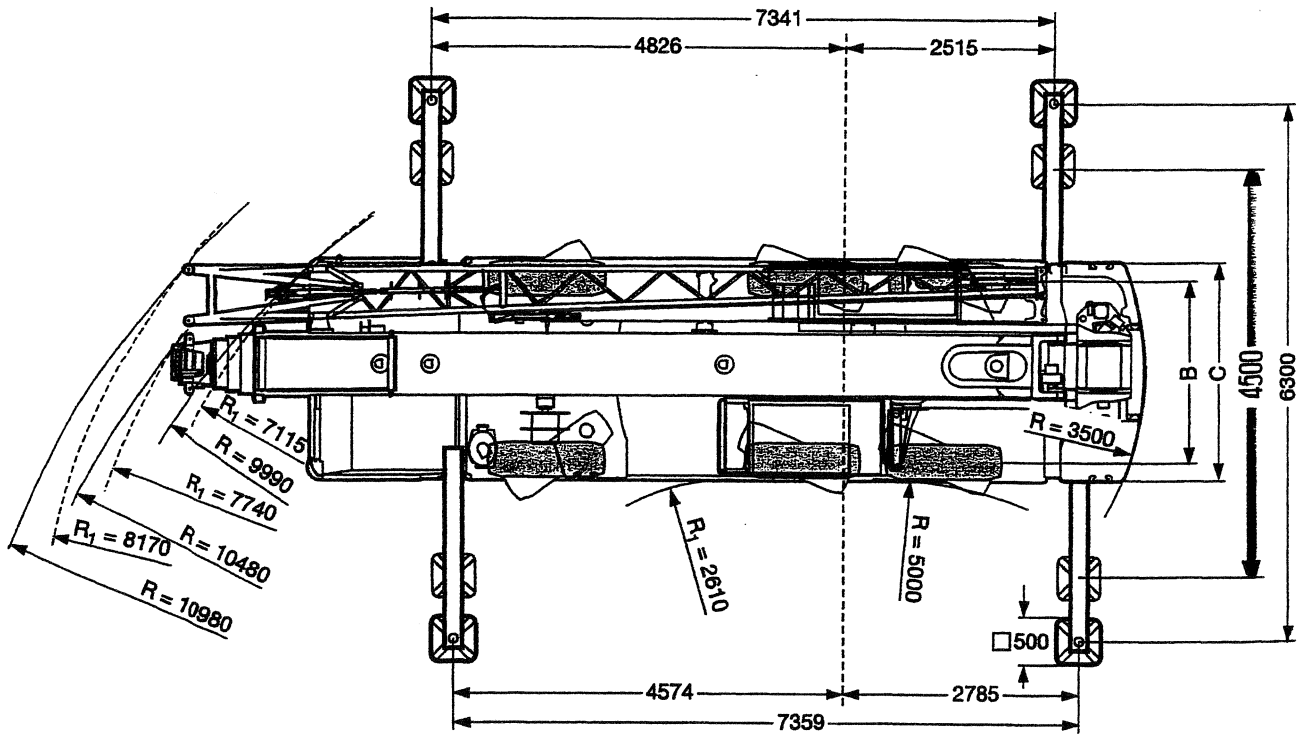
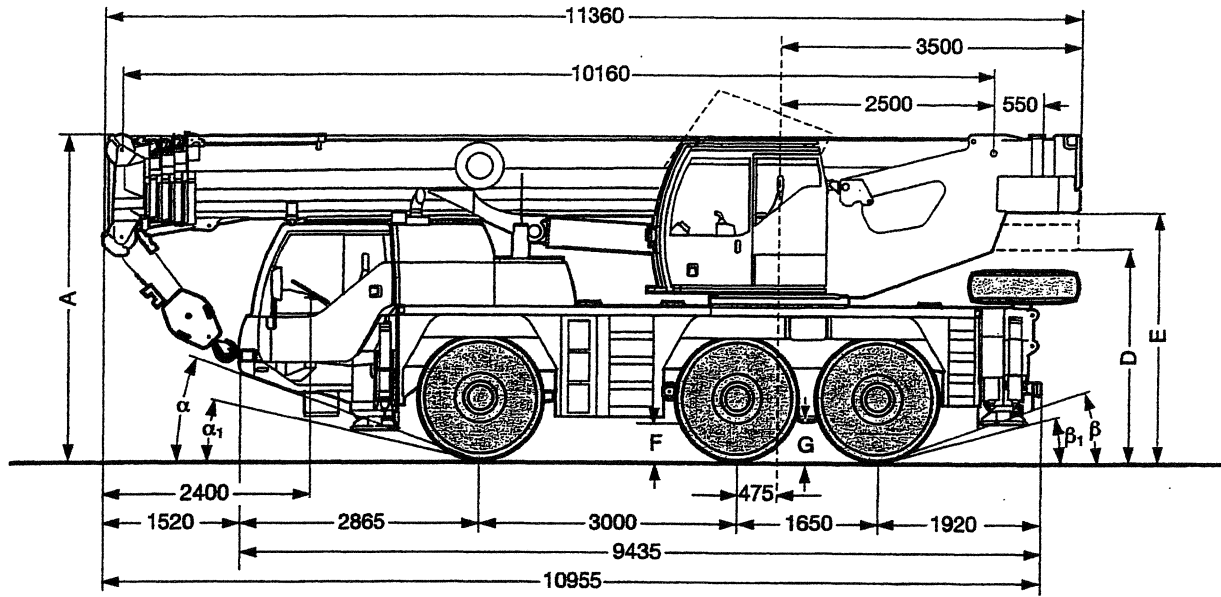
**VERTICAAL TRANSPORT
NEDERLAND B.V.**

HIJSTABEL LIEBHERR - 60 TON

Kraan afgestempeld, Stempelbasis 7.35 x 6.3m
360° Werkbereik, 9.4 ton contra-gewicht

Vlucht radius meters	Gieklengte in meters															Klappjib 9.5 m			Klappjib 16 m			Vlucht Radius Meters
	10.2	13.6	17.0	20.5	23.9	27.3	30.8	34.2	37.6	40	40			40								
	60										0°	20°	40°	0°	20°	40°						
2.5																						
3	48.5																					
3.5	44.0	44.2	42.2																			
4	40.0	40.2	38.2	36.3																		
4.5	36.5	36.7	34.7	32.8	30.8														4.5			
5	33.5	33.7	32.7	31.3	29.8	23.1													5			
6	27.3	27.2	27.5	25.5	24.0	20.7	18.3	15.0											6			
7	22.5	23.3	22.6	21.3	19.8	18.5	16.7	14.7	12.0	10.0									7			
8		19.0	19.0	18.0	16.8	16.1	15.1	13.8	11.3	9.9	5.6								8			
9		15.5	15.9	15.4	14.6	14.3	13.0	12.8	10.8	9.4	5.6			3.1					9			
10		13.1	13.4	13.4	13.2	12.5	11.9	11.2	10.3	9.0	5.4			3.1					10			
12			10.0	10.3	10.4	9.8	9.7	9.4	8.9	8.3	5.1	5.2		3.1					12			
14			7.8	8.2	8.2	8.1	7.9	7.7	7.2	7.0	4.8	4.9	4.6	3.0					14			
16				6.6	6.6	6.6	6.5	6.4	5.9	5.8	4.6	4.5	4.3	2.9	2.5				16			
18					5.5	5.5	5.3	5.4	5.0	4.9	4.4	4.2	4.1	2.8	2.4				18			
20					4.6	4.6	4.4	4.5	4.1	4.0	3.9	3.9	3.9	2.7	2.3	2.1			20			
22						3.9	3.7	3.7	3.4	3.4	3.4	3.6	3.7	2.6	2.3	2.0			22			
24						3.3	3.2	3.1	2.9	2.8	2.9	3.1	3.3	2.5	2.2	2.0			24			
26							2.7	2.7	2.4	2.4	2.5	2.7	2.8	2.4	2.2	2.0			26			
28							2.3	2.3	2.1	2.0	2.1	2.3	2.4	2.2	2.1	2.0			28			
30								2.0	1.7	1.7	1.8	2.0	2.1	1.9	2.1	2.0			30			
32									1.4	1.4	1.5	1.7	1.8	1.6	1.9	2.0			32			
34									1.2	1.2	1.3	1.4	1.5	1.3	1.6	1.8			34			
36										1.0	1.0	1.2	1.2	1.1	1.4	1.5			36			
38											0.8	0.9	1.0	0.9	1.1	1.3			38			
40											0.7	0.7	0.8	0.8	1.0	1.1			40			
42												0.6	0.6	0.6	0.8	0.9			42			
44															0.6	0.7			44			
46																0.6	0.7		46			

Afmetingen Liebherr 60-ton



R₁ = Allradlenkung
All-wheel steering
Direction toutes roues

	Maße / Dimensions / Encombrement mm											
	A	A	B	C	D	E	F	G		b	b ₁	
		100 mm*										
16.00 R 25	3750	3650	2231	2680	2360	2870	460	420	21°	15°	21°	15°

abgesenkt / lowered / abaissé